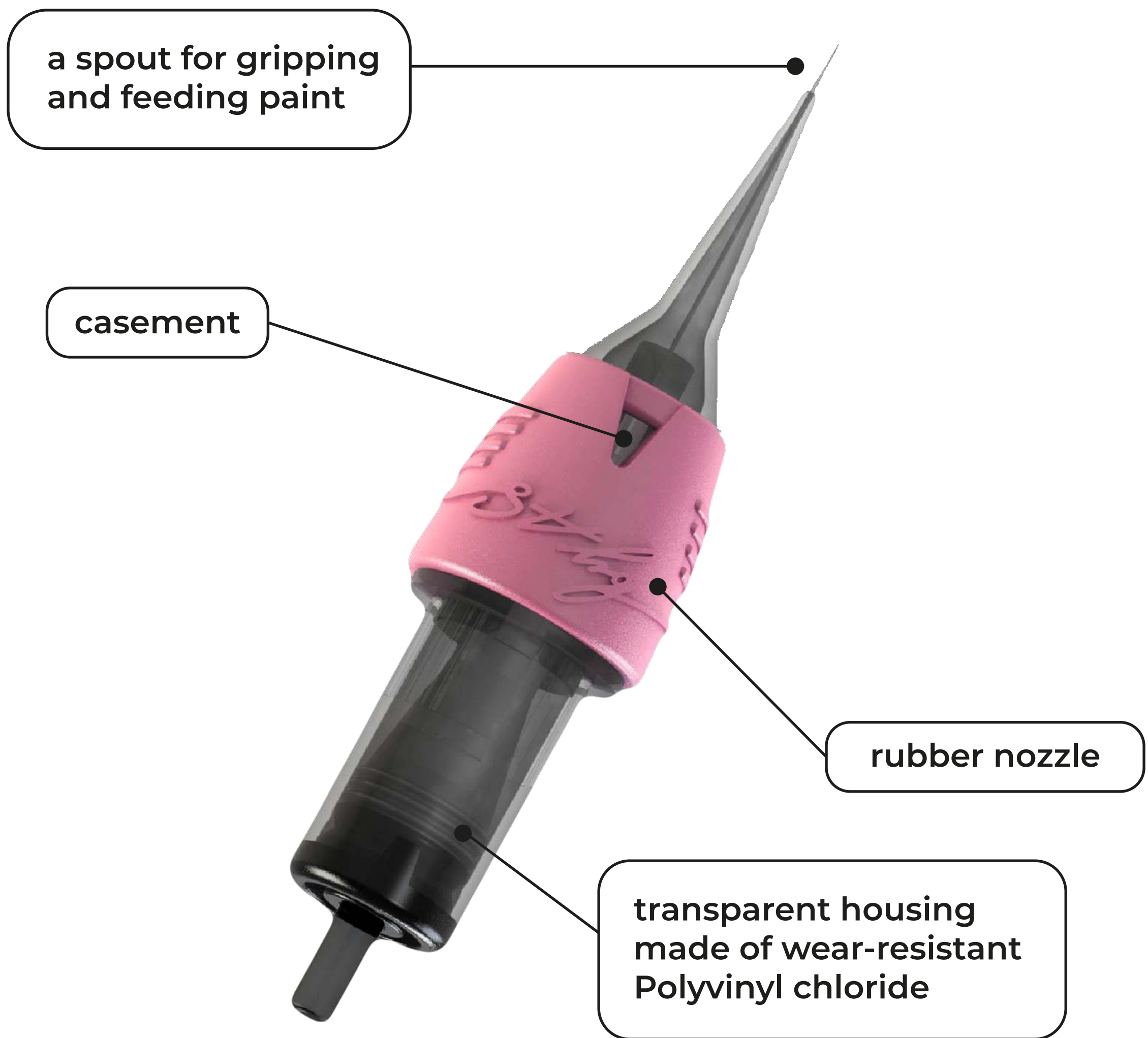




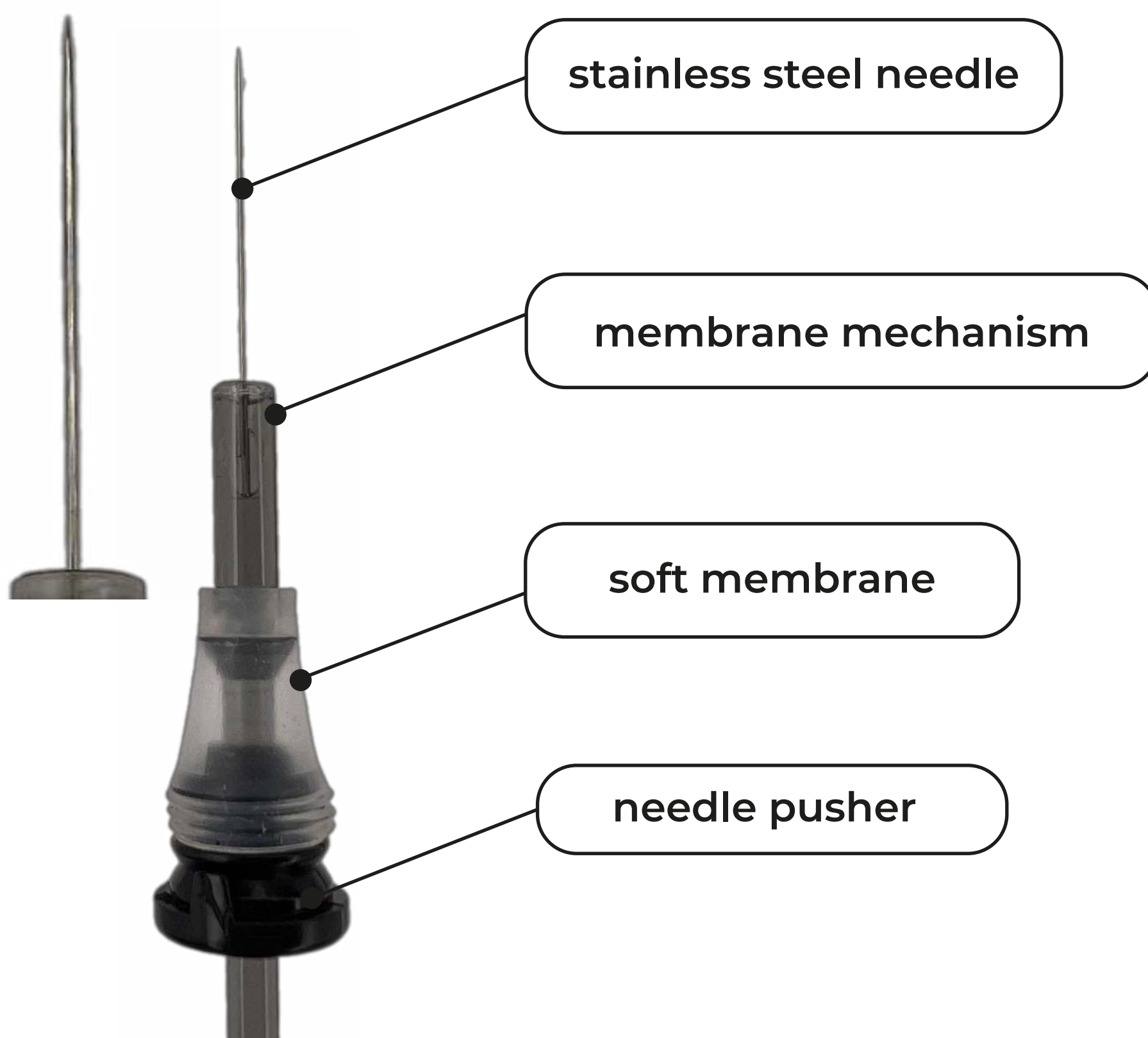
# GUIDE CARTRIDGES BY "AS"

STRUCTURE / MARKING / DIAMETER / CONFIGURATION /  
TYPE OF NEEDLE SHARPENING / TYPE OF NEEDLE POLISHING /  
HOW TO CHOOSE A NEEDLE /

# THE STRUCTURE OF THE CARTRIDGE



# INTERNAL STRUCTURE



# MARKING OF CARTRIDGES



## 12 / 01 RL LT

needle diameter

the number of needles in the spike

needle configuration

type of sharpening

## NEEDLE DIAMETER

The most popular diameters are from 0.25 to 0.35 mm  
The larger the diameter, the larger the pixel



#08

#10

#12

for working on the lip contour  
and for drawing hairs

Ø 25

for coloring lips, eyebrows  
and for the arrow with  
a shading

Ø 30

for coloring lips, eyebrows  
and for the arrow with  
a shading

Ø 35

# NEEDLE CONFIGURATION

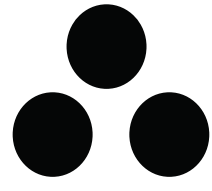
The number of needles in the spike

Round Liner

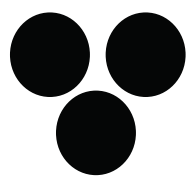


1RL

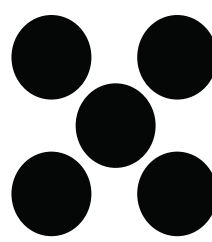
Round Shader



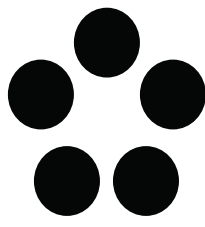
3RS



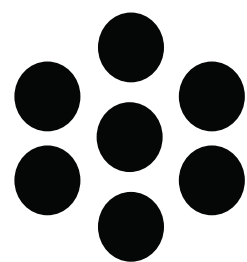
3RL



5RS



5RL



7RS

Round Liner

The needles that create the line are brought together at the end into a single bundle

Round Shader

Creating a bundle-the needles are stuck, but divorced

# TYPES OF NEEDLE SHARPENING

Sharpening determines how sharp the needle is

LT

LONG TAPER

sharp,  
long sharpening

MT

MEDIUM TAPER

sharpening  
of medium length

**ST**

**SHORT TAPER**

**Short, blunt,  
bullet-shaped**

**LT-T**

**LONG TAPER  
TEXTURED**

**Sharp sharpening  
with embossing**

**The most popular sharpening tools are  
LT (long) and MT (medium)**

**SHORT TAPER**

**short / blunt/ bullet-shaped  
sharpening (not used)**



**MEDIUM TAPER**

**medium / standard  
sharpening**

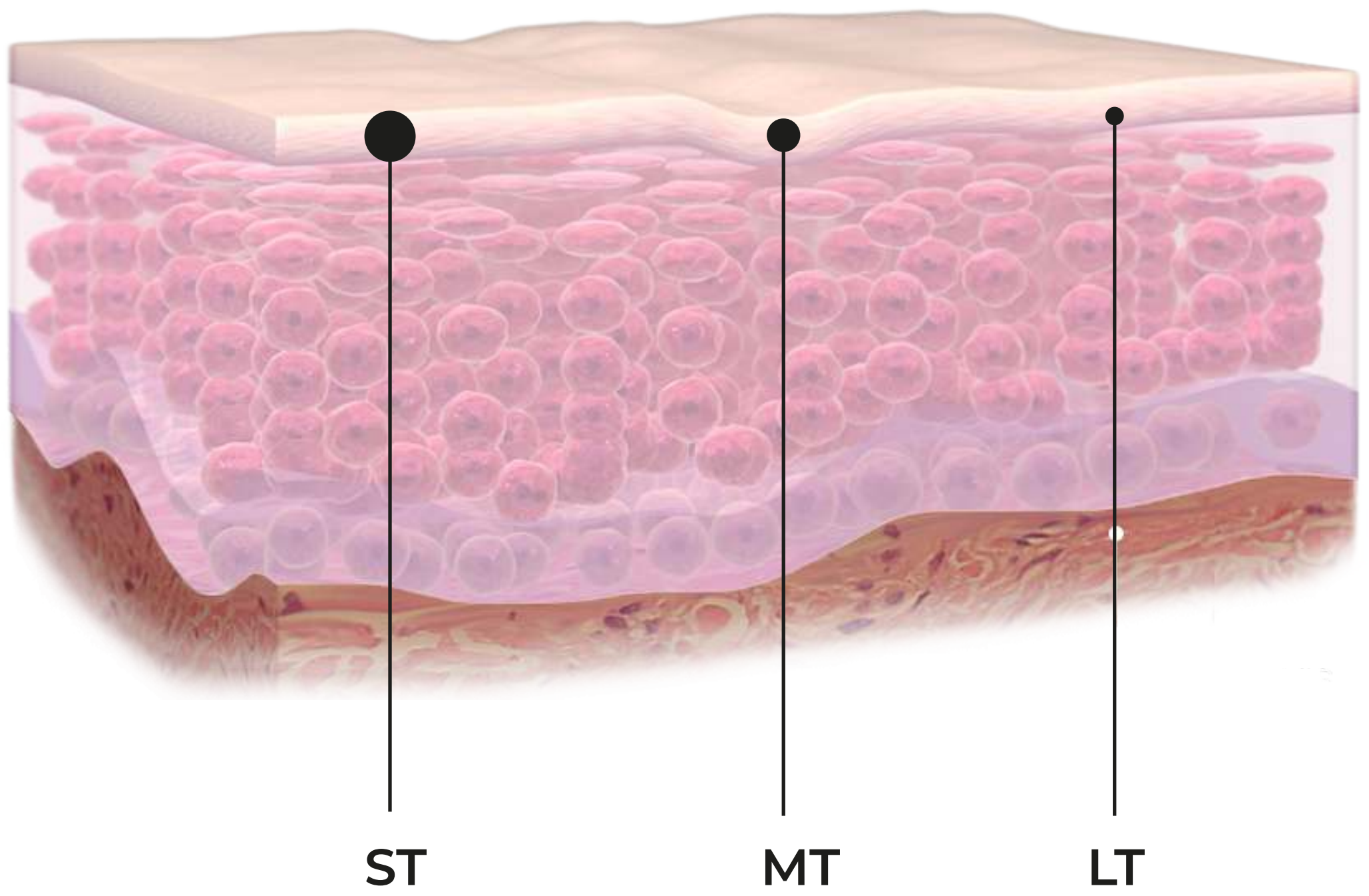


**LONG TAPER  
TEXTURED**

**long / sharp sharpening**



**The dimensions of the needle print are of the same  
diameter, but of different sharpening with the same  
depth of immersion into the skin**

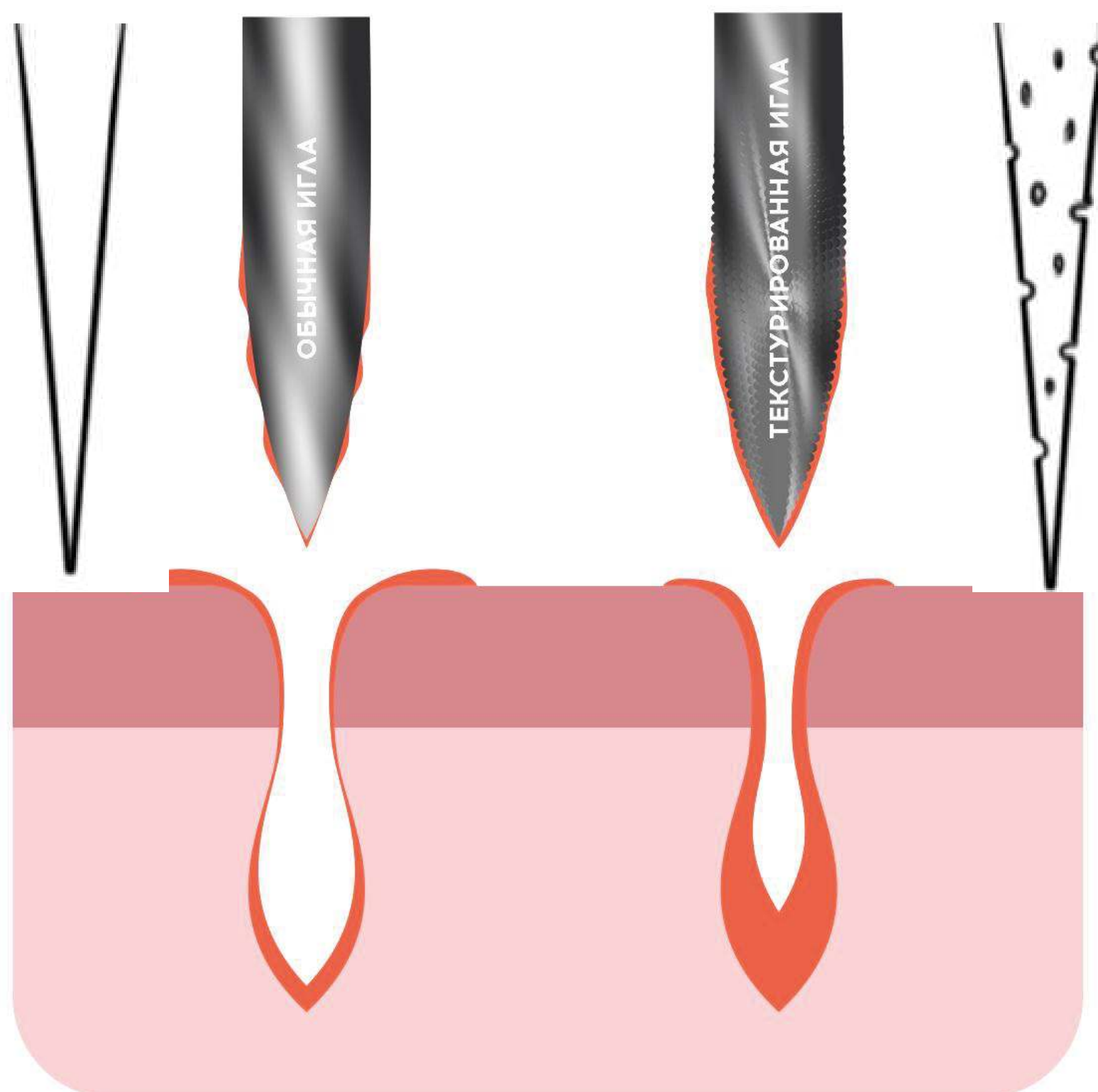


## TYPES OF NEEDLE POLISHING

Textured LT-T embossed needle allows you to hold more pigment

SMOOTH

ROUGH



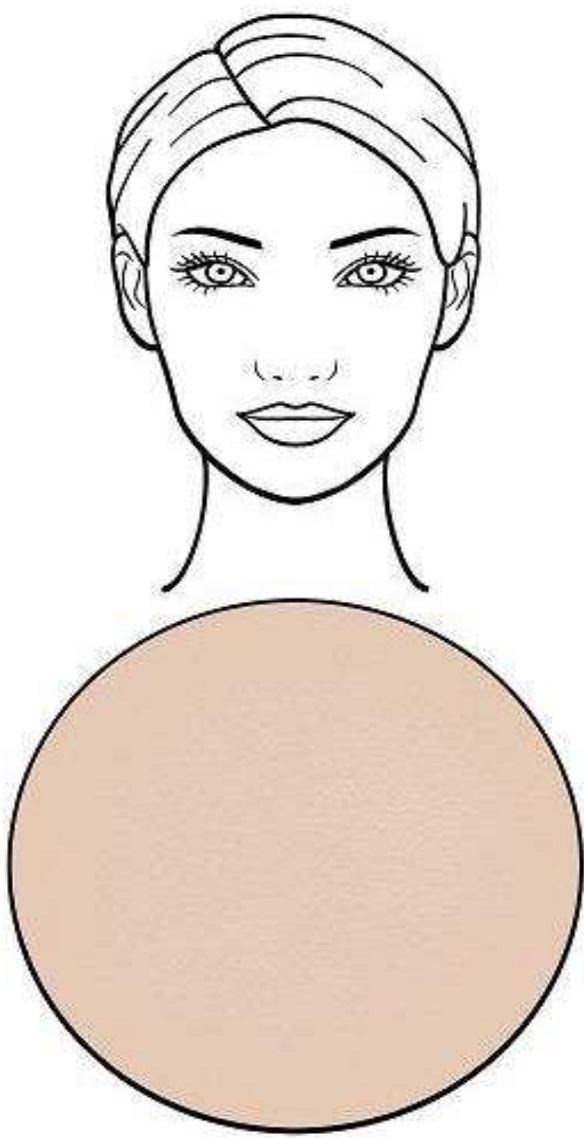
A puncture from a classic needle

Puncture from the needle RLLT-T

# HOW TO CHOOSE A NEEDLE?

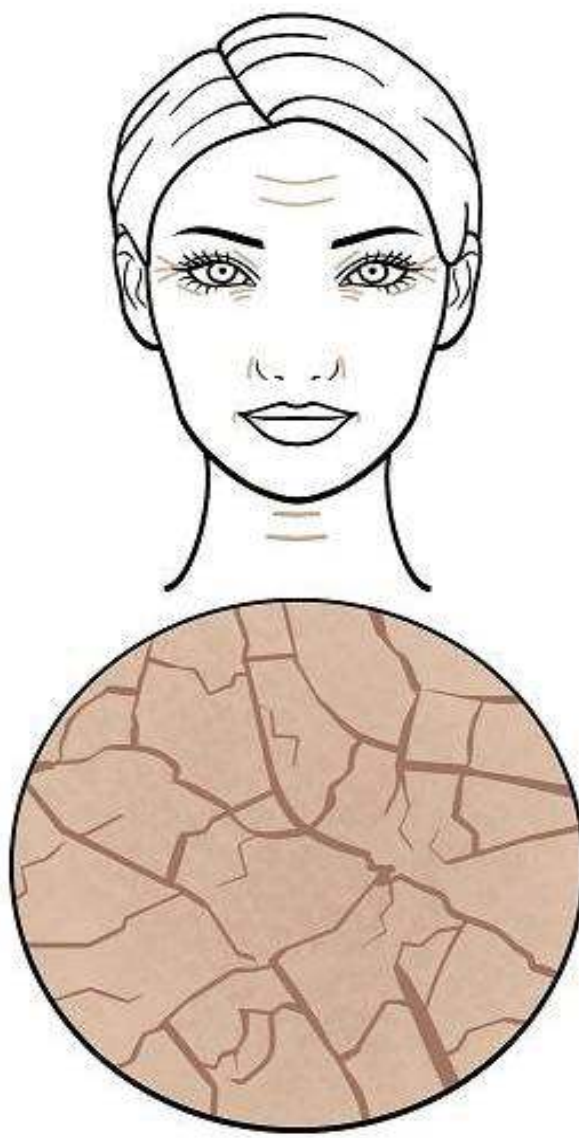
We determine the type of skin of the client's face by characteristic features

**NORMAL**



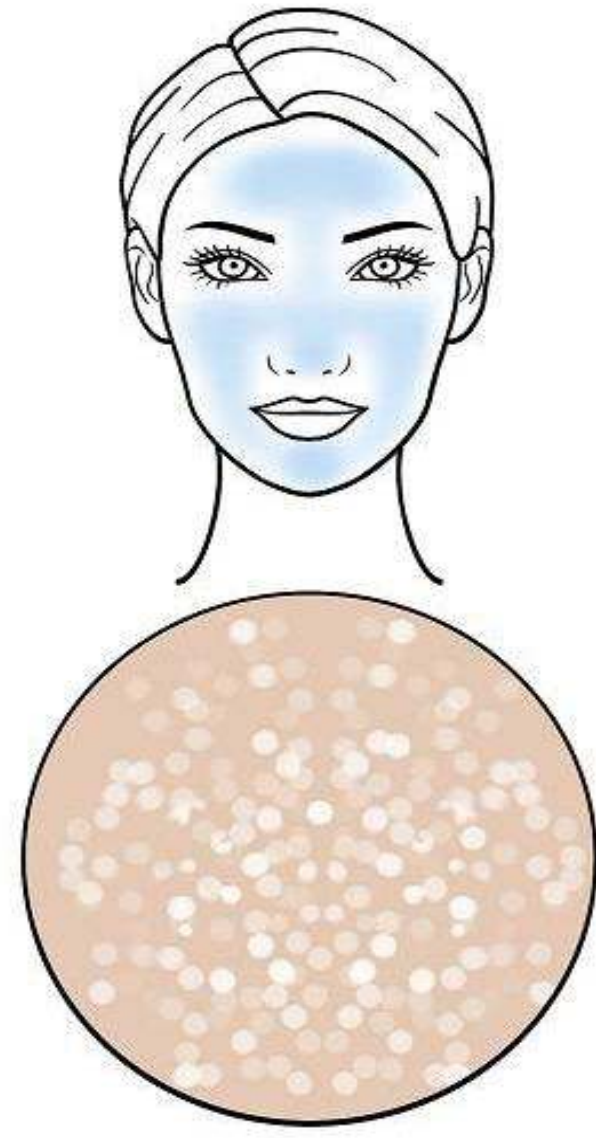
There is no feeling of tightness and greasiness

**DRY**



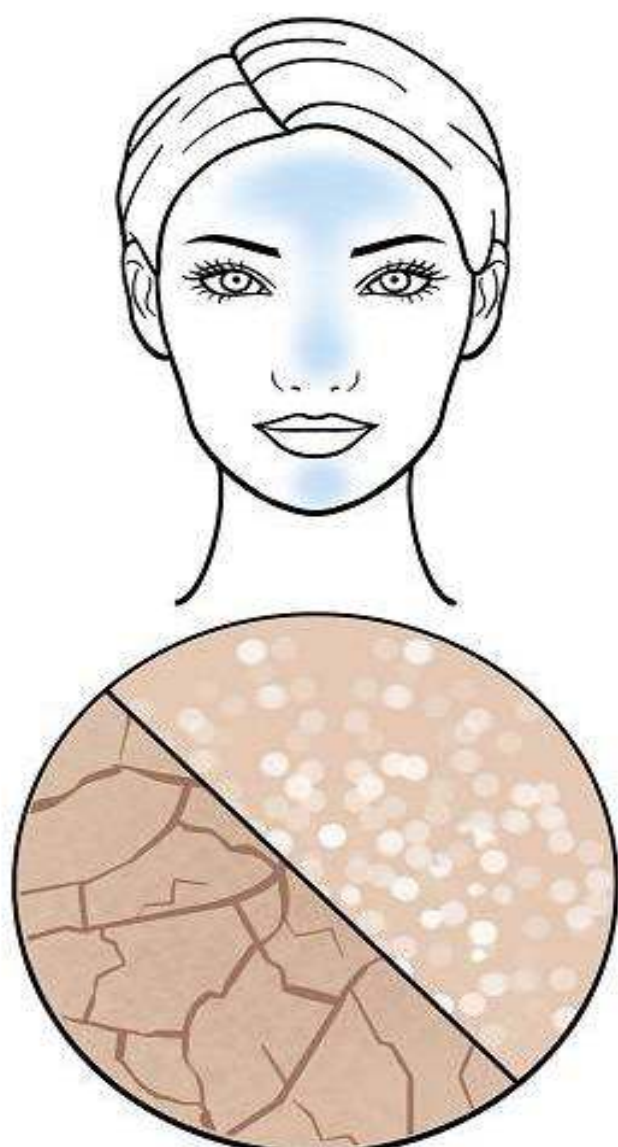
There is a feeling of tightness, peeling

**GREASY**



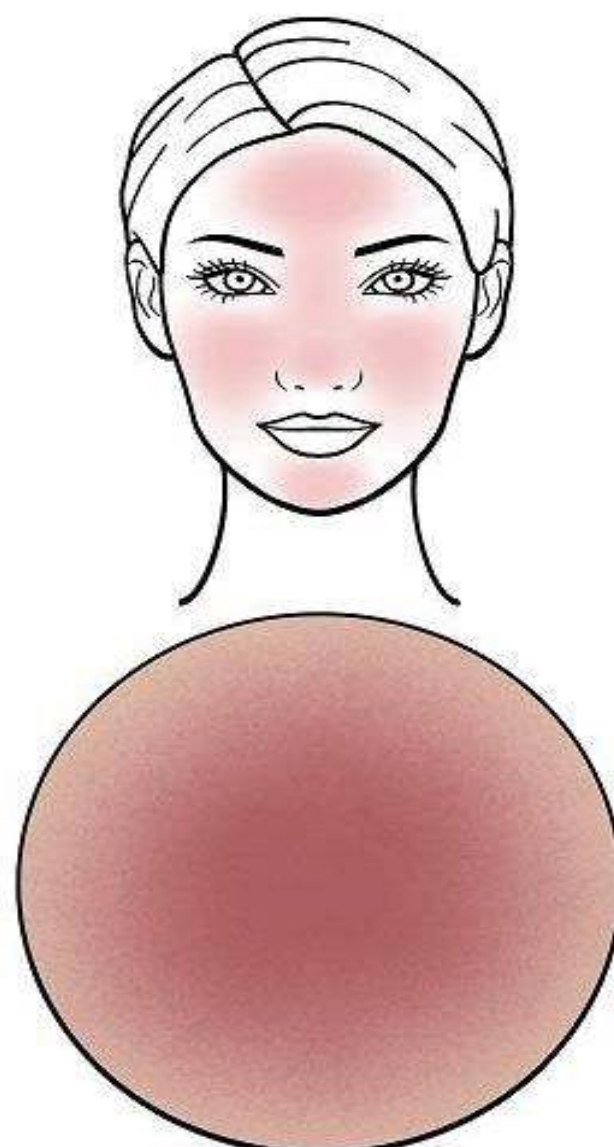
Feeling of greasiness; pronounced pores, sebum and hyperkeratosis

**COMBINED**



Fat content of the T-zone; normal/dry cheeks

**SENSITIVE**



Redness, dryness, irritation, hyperemia and rosacea

We look for a line in the table according to the age and skin type of the client, and select the needle we need

SKIN TYPE	NORMAL	DRY
CLIENT'S AGE		
18+	1 RLLT - 0.25 1 RLLT - 0.30	1 RLLT - 0.25 1 RLLT - 0.30
30+	1 RLLT - 0.25 1 RLLT - 0.30 1 RLLT - 0.35	1 RLLT - 0.25 1 RLLT - 0.30 1 RLLT - 0.35
50+	1 RLLT - 0.30 1 RLLT - 0.35 1 RLMT - 0.30 1 RLMT - 0.35	1 RLLT - 0.30 1 RLLT - 0.35 1 RLMT - 0.30 1 RLMT - 0.35
SKIN TYPE	SENSITIVE	GREASY
CLIENT'S AGE		
18+	1 RLLT - 0.25 1 RLLT - 0.30	1 RLLT - 0.25 1 RLLT - 0.30
30+	1 RLLT - 0.30 1 RLMT - 0.30	1 RLLT - 0.30 1 RLMT - 0.30
50+	1 RLLT - 0.35 1 RLMT - 0.30	1 RLLT - 0.35 1 RLMT - 0.30